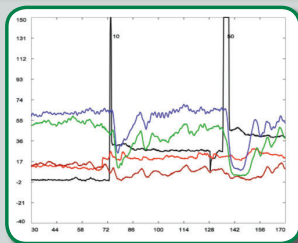


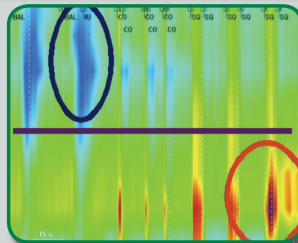
3rd International Anorectal Manometry & Endosonography Course

Evelina London Children's Hospital

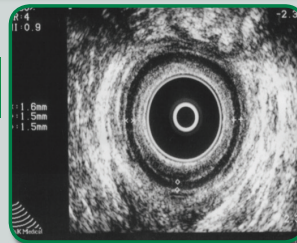
Hands-on Training Workshop - 28th November 2024



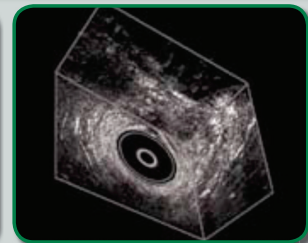
**Anorectal Manometry
Conventional**



**Anorectal Manometry
3D High Resolution**



2D Endosonography



3D Endosonography

Course is ideal for established Paediatric Surgeons, Paediatricians, Trainees and Nurses starting or undertaking anorectal manometry and endosonography in children.

The course will enable you to gain direct experience in anorectal manometry procedure & endosonography scanning and in the interpretation of the results.

There are limited places.

Venue: Pathology Conference Room
2nd Floor, North Wing
St. Thomas' Hospital
Westminster Bridge Road, London SE1 7EH

Date: 28th November 2024

Cost: Consultant £130, Registrars/Trainees £90,
Nurses £60

Course organiser:

Mr Alireza Keshtgar,
Consultant Paediatric Colorectal & Neonatal
Surgeon
Email: Ali.Keshtgar@gstt.nhs.uk

Programme

- Anorectal and pelvic floor Functional Anatomy
- 3D High Resolution Anorectal Manometry
- 3D Endosonography Scanning
- Botulinum Toxin Treatment
- Antegrade Colonic Enema (ACE) stoma
- Biofeedback Training
- Video of Operation Technique
- Several Work Stations for:
 - Functional Constipation & Soiling
 - Anorectal Malformations
 - Hirschsprung Disease

For further information, please contact:

Samuel Lewis

Educational Programme Director
Tel: 07785994659 / 020 718 80853
Email: Samuel.Lewis@gstt.nhs.uk

Traveling to Evelina & St Thomas' Hospitals, London

St Thomas' Hospital, Westminster Bridge Road, London SE1 7EH, Tel: **020 7188 7188**

Tube: The nearest tube stations are:
 Westminster - District, Circle and Jubilee lines (10 minutes walk)
 Waterloo - Bakerloo, Jubilee and Northern lines (15 minutes walk)
 Lambeth North - Bakerloo line (15 minutes walk)

Bus: Allow 15 - 20 minutes to get from the bus stop to where you need to be in the hospital.

The following bus routes serve St Thomas':

- 12, 53, 148, 159, 211, 453, C10 - stop at Westminster Bridge Road
- 77, 507, N44 - stop at Lambeth Palace Road
- 3, 344, C10, N3 - stop at Lambeth Road (15 minutes walk)
- 76, 341, 381, RV1 - stop at York Road
- N44, N155, N159, N381 - Night buses stop at Westminster Bridge Road
- N3 Night bus stops at Lambeth Road

See the bus routes map (PDF 203Kb) or for information about buses and tubes, please call Transport for London on **020 7222 1234** (24 hours) or visit the Transport for London journey planner website.

Bicycle: Bicycle racks are located at the front of the main reception along side Gassiot House and next to the Florence Nightingale Museum, both areas are covered by CCTV. See useful cycling information on the Transport for London website.

Train: Waterloo, Waterloo East, Victoria and Charing Cross are the nearest railway stations, and a 15 minute walk away. For further information, please call National Rail Enquiries on **08457 484950** or visit National Rail website.

Car: Parking for patients and visitors is very limited, and there is often a queue. The car park is 'pay on foot' so please have the correct change. Pay and get your exit ticket before returning to your car. Parking charges are £2.30 per hour or any part of an hour. Apply 24 hours a day. Free for disabled patients with an appointment that day - get a form from the main reception for your clinicians to sign. 16 free disabled parking bays outside the main car park for visitors and relatives.

